



SARPYACHTS



46 m



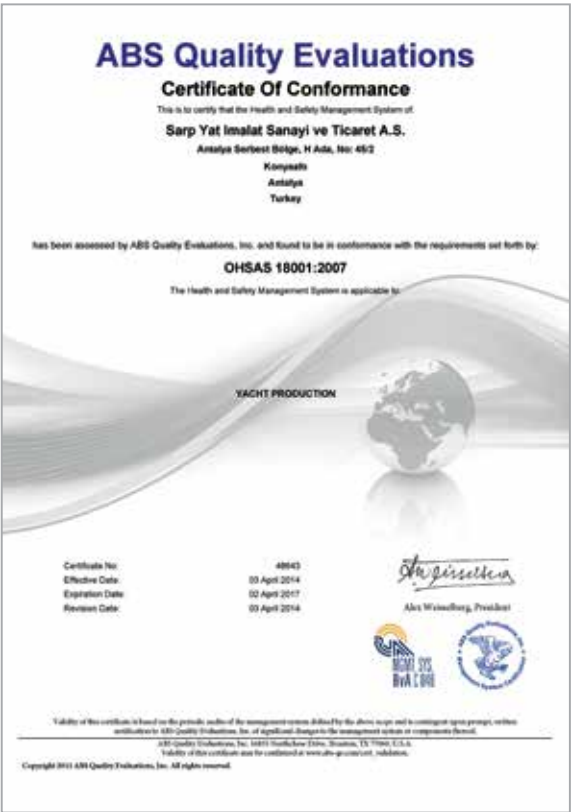
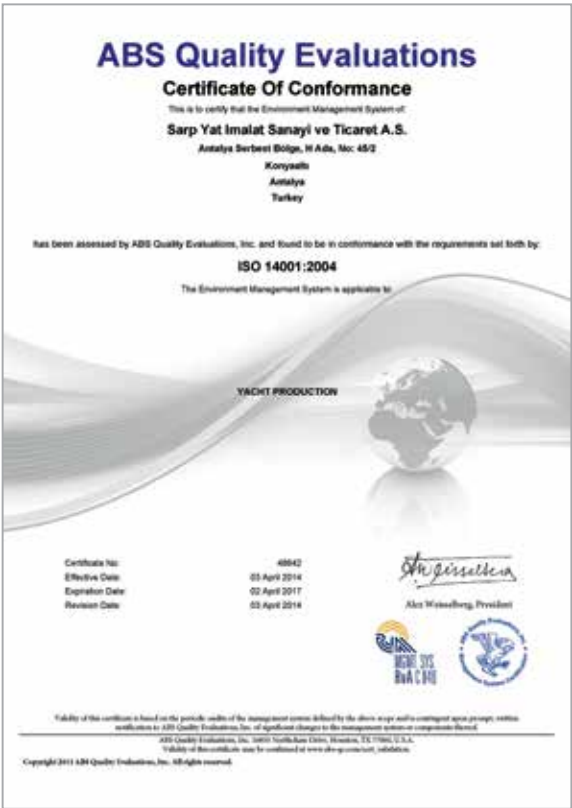
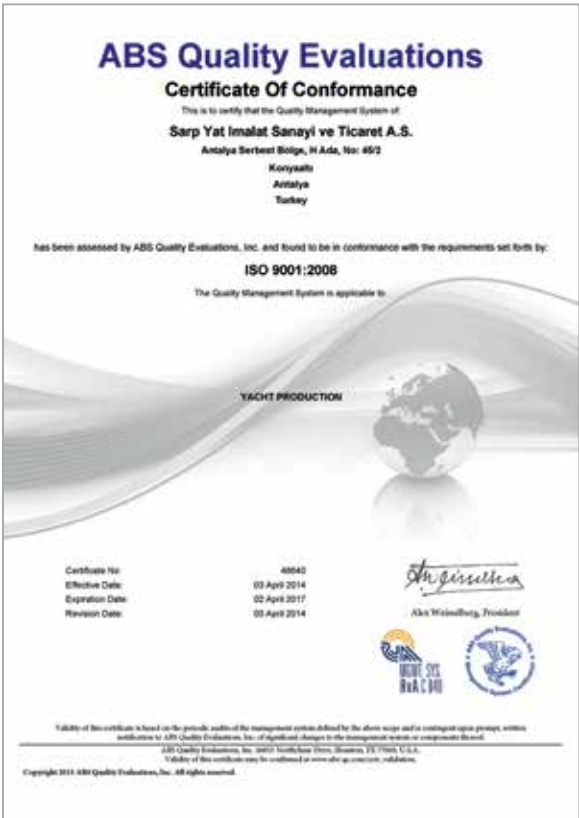
Sarp Yachts has been founded with a big dream. As like all big projects... Our dream was to build a successful shipyard which would integrate quality into the world yacht sector. Our current management experience underlined the infrastructure (system) as the most important subject in order to achieve this.

Thus we had begun our journey to our dreams by establishing our systems. Finally in 2013 we have managed to combine our three quality certifications (ISO 9001, ISO 14001, ISO 18001 OHSAS) as integrated under our shipyard's roof from American Bureau Shipping (ABS). We, in accordance with our quality policy, have adopted customer focused, reliable service approach instead of leaving the quality and work safety just as procedures (instructions) standing on the wall and surrounded with classy frames.

This culture saving of us have been reflected onto business results and obtained positive feedbacks. We have made Sarp Yachts brand name to be called with quality and trust concepts in the yacht sector. We are constantly improving our current processes in the frame of “constant improvement” and leading them to the future. We are always sensitive with the environment with all kinds of business we perform.

In order to carry our dream one step further, please come and let us design and produce the dream yacht of yours together.

S. Ünal Şakar
General Manager





SARPYACHTS

Sarp Yachts belongs to Eti Group Companies, one of the most recognized brands in the food industry of Turkey and to Sarp Havacılık Lojistik Turizm Sanayi Ticaret A. S. which is one of the largest firms of Turkey in the field of logistics and to Kanatlı Family.

We have founded one of the largest (10,000 m²) and most modern facilities in the Free Zone of Antalya in South Turkey, designed for the new-construction and refit of luxury motor and sailing yachts up to 70 m in length.

SARP YACHTS is the only shipyard which has Integrated Quality Management System (ISO 9001 & ISO 14001 & ISO 18001 OHSAS) from American Bureau Shipping (ABS) in the Free Zone of Antalya.

THE SPIRIT OF SARP: WE OFFER YOU STYLE, HIGH-TECH QUALITY AND VALUE AT A FAIR PRICE. OUR YACHTS ARE BUILT WITH METICULOUS ATTENTION TO DETAIL AND RESPECT FOR THE GREAT TRADITIONS OF YACHT BUILDING. A YACHT FOR YACHTSMEN.

OUR MISSION: IS TO BUILD WORLD CLASS, CUSTOMER-ORIENTED YACHTS (THAT MEET CUSTOMER DEMANDS AND EXPECTATIONS) BY CONTINUOUSLY IMPROVING OUR INFRASTRUCTURE, TECHNICAL ASPECTS AND EMPLOYEES.

OUR VISION: IS TO BE A SHIPYARD HAVING THE COMPETITIVENESS IN THE SECTOR AS WELL AS BEING A LEADING AND TRUSTED YACHT BRAND IN THE WORLD.



ISO 9001:2008



ISO 14001:2004



OHSAS 18001:2007

DESIGN

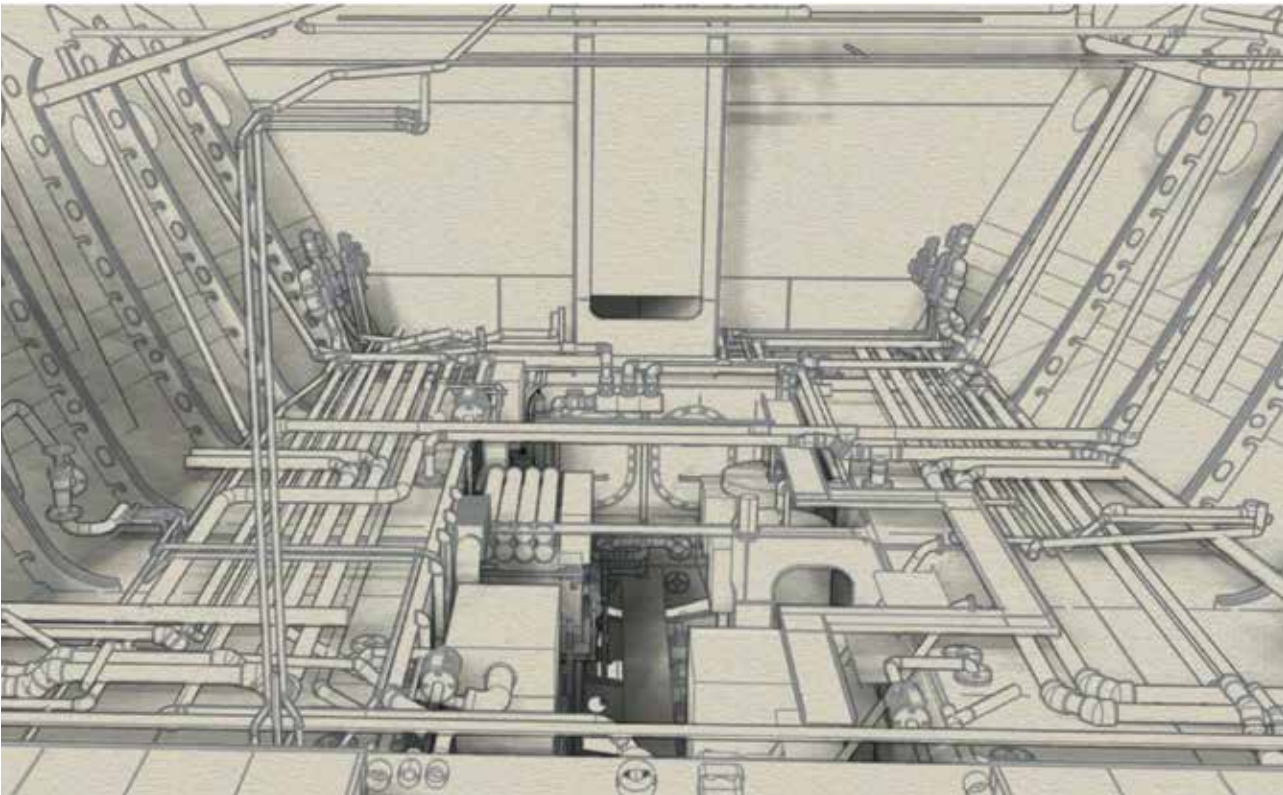
Complementing our in-house design team, SARP YACHTS works with the world’s most renowned designers. More than ever before, the complexity of design, exotic materials and superior standards, stretch the boundaries of what can be built.

SARP YACHTS is one of the very few yacht-builders able to cope and even excel with such a challenge. We actively seek innovative and unusual projects and recent launches prove our ability to fuse luxury interior craftsmanship with complex exterior engineering.

SARP YACHTS is designed to have a timeless appeal. Creating an iconic yacht of which an owner can be proud of, is very much part of the design brief we launch.

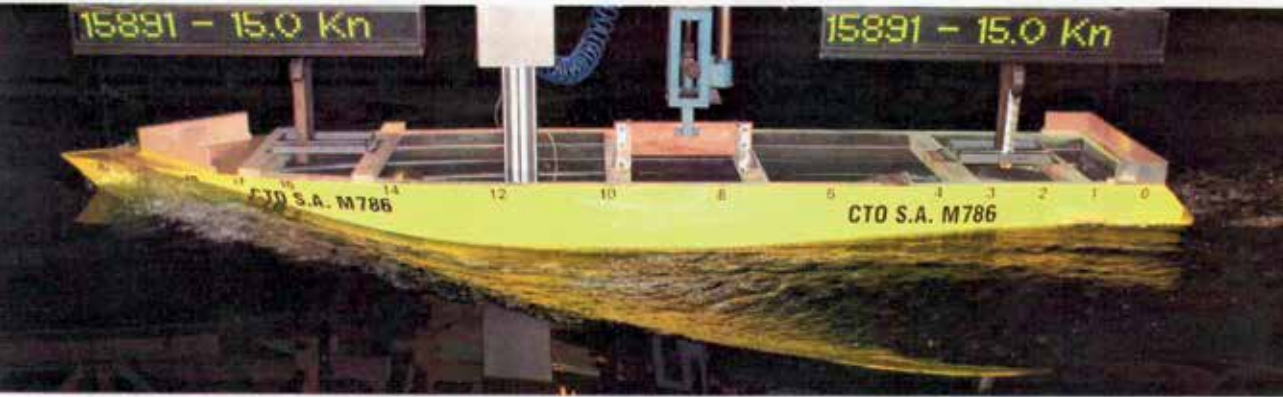
ENGINEERING & TECHNOLOGY

SARP YACHTS have state-of-the-art engineering. Every detail is thought through and tested so that the framework behind the luxury is absolutely reliable. On this framework we integrate the most exquisite finery, the most spectacular effects and the most innovative systems. We can include them all because of our thorough understanding and exhaustive testing of engineering principles. Using industry-leading design programs our engineers and naval architects create 3D designs, updated in real time.



Every part of the technical team can log into the same data, achieving a reduction in total building time and improvement of quality for the final output. Working in close collaboration with one of the world’s foremost naval architects, our in-house experts have total control of the build process from concept to launch. SARP YACHTS offers a broad range of tested platforms on which various projects can be based.

We extensively test scale models at CENTRIM TECHNIKI OKRETOWE S.A in POLAND.



A series of tank and propeller tests with programmes designed to analyse the performance, wave keeping and handling qualities on our yachts.

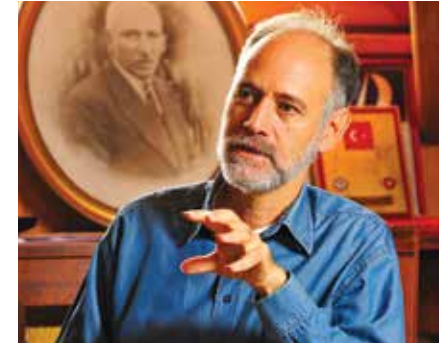
In co-operation with the relevant Classification Society, tests are conducted in a deep-water basin as well as depressurised towing tank.



46m Motor Yacht

As the kick-off project of brand new Sarp Yachts, we had to create a motor-yacht which would stand the test of time.

The intention for the design was to give character to the vessel in every possible setting she may sail to. For this her lines had to be nicely flowing, well-proportioned and fresh.



DESIGNER COMMENTS ON SARP 46m MOTOR YACHT

Her shape and size are carefully refined to stay just below the 500 gross ton mark. Steel was the obvious choice for a strong and reliable hull with ample tank capacity. However we opted for epoxy composite to construct our curvy superstructure. By this way, we could save weight from superstructure and fairing compound. All these became a reality thanks to the diligence and experience of our yard manager Emre Sandan and his team.

TANJU KALAYCIOĞLU – MARCH 2012







Her hull was analysed in depth by CTO of Gdansk using cfd and tank test methods for low resistance and reduced wave profile. Watertight integrity was paramount in our design agenda, hence we have incorporated at least two additional watertight bulkheads and cofferdams into our hull structure. On the other hand many hours were spent honing the styling with 3d design tools. Even a scale model was built to iron out any discrepancies.

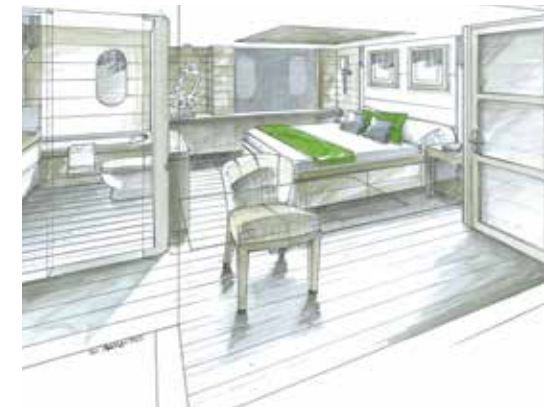
With our in house design and engineering team each stage of outfitting is carefully planned and executed ensuring a quality level enviable even by established European yards.

We have approached a relatively young but very well established designer to be the chef of our interior. Adam Lay's yet another innovative, natural and welcoming interior creation will be manufactured by another industry legend, Hasan Ulutaş. There are obviously many trades that I cannot list here, but I can see into the future assured of success because we have convened the best possible team under the Sarp umbrella.

Normally building a custom yacht in Turkey is very good value for money, but this is not enough for our dreams. We have set ourselves a philosophy to pursue the best of quality and attain the top finish.



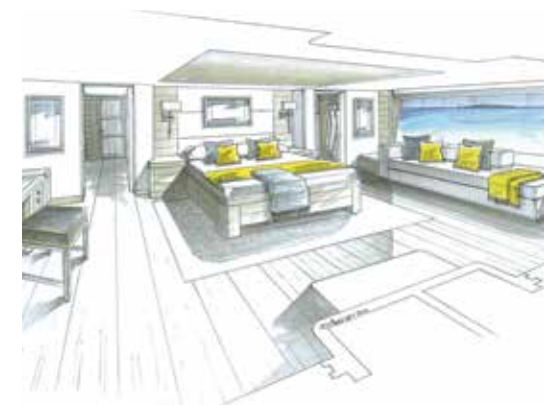
Upper Deck Lounge



Guest Cabin



Main Salon and Dining



Owner's Cabin







SARP 46m MOTOR YACHT INTERIOR

Created by Adam Lay Studio, the interior of Sarp Yachts' new 46m motor yacht blends loft apartment styling and mountain chalet influences with a combination of high end natural timber and metal finishes.

ADAM LAY STUDIO – JANUARY 2013



Main Salon and Dining



Main Salon and Dining



Main Salon and Dining



Main Salon and Dining



Upper Deck Lounge



Upper Deck Lounge



Upper Deck Aft



Guest Cabin



Sun Deck



Owner's Cabin

The aim was to produce a sophisticated and elegant interior, interwoven with clean simplicity of design that results in an inviting, comfortable and relaxing atmosphere.

Taking inspiration from natural materials and textures, open grained planked wooden floors, quality leathers and intricate metal detailing produce a distinguished colour palette of rich dark bronzes, silvers and grey stained ash veneer.

The theme is extended throughout the yacht. Large screens feature in the main saloon entrance with petrified patterned leaves set between sheets of clear glass. Wall finishes are a balance of wooden planks and pewter coloured slubby silk wall paper.

Customised to suit the décor in each cabin, satin nickel door and cabinet hardware add a touch of refined sparkle to the calm and comfortable backdrop.

Honed stone tiles and flooring in the bathrooms compliment the fine Dornbracht tapware and accessories. Pebbles inlayed into the bathroom floor add further texture.

Well chosen furniture includes Minotti sofas, Glyn Peter Machin and Giorgetti chairs. Superior fabrics by Rubelli, Weitzner, Lelievre, Chase Erwin, Romo, Kravet and Armani Casa tie the interior together with highlights of bright colour, bold graphics and accents.

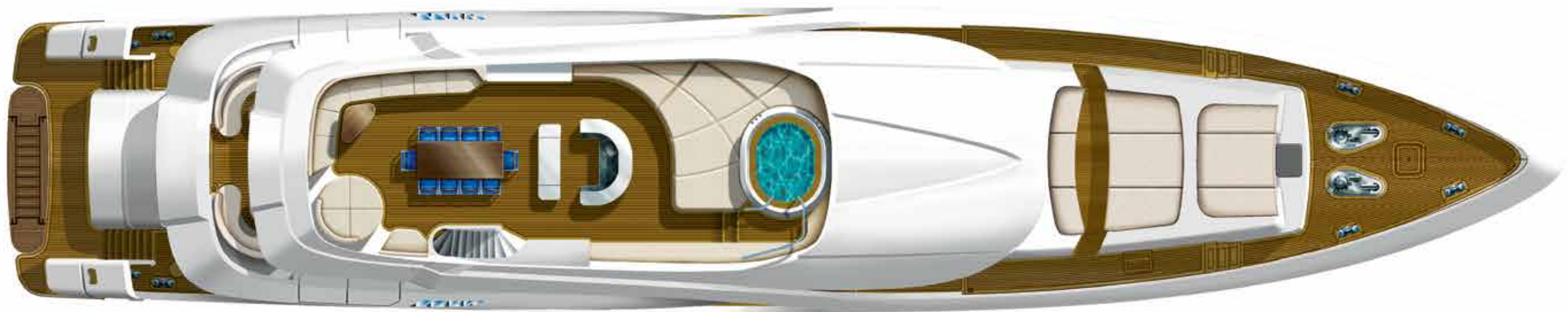
Intended to make a sophisticated statement with a strong visual impact, the outcome is a wonderful marriage of harmonious and clean lined design combined with subtle textures, tones and finishes that delight the senses.



Owner’s Bathroom



Owner’s Cabin



Sun Deck



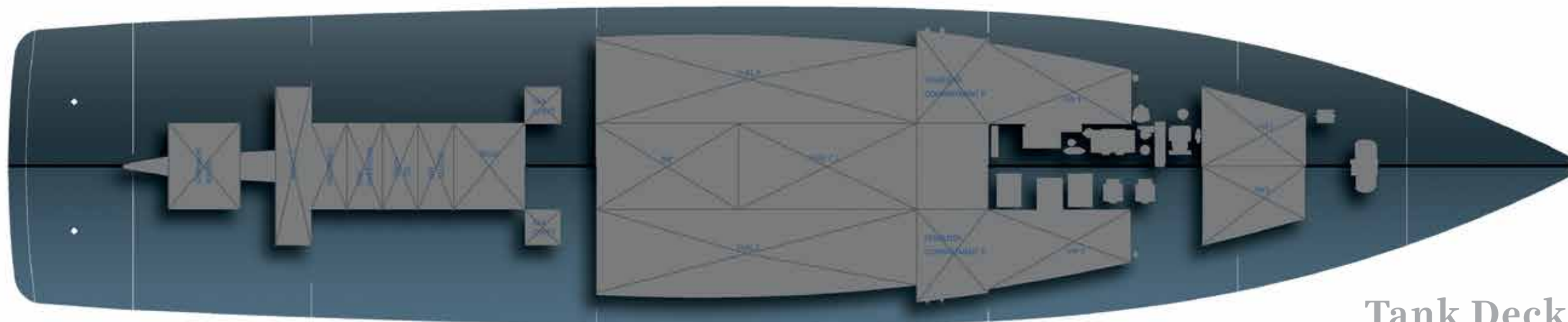
Upper Deck



Main Deck



Lower Deck



Tank Deck

TECHNICAL SPECIFICATION

46m Motor Yacht

GENERAL

YARD NO	NB101
TYPE	Twin Propeller Round Bilge Displacement Motor Yacht
BUILDER	Sarp Yachts
NAVAL ARCHITECT	Taka Yachts, Osman Tanju Kalaycıoğlu
EXTERIOR STYLIST	Osman Tanju Kalaycıoğlu
INTERIOR DESIGNER	Adam Lay
ENGINEERING	Sarp Yachts
DELIVERY	June 2015
CONSTRUCTION	Steel Hull (Grade A = St 42), Composite Superstructure
CLASSIFICATION	ABS + A1 YACHTING SERVICE + AMS Large Commercial Yacht Code LY2 (Under 500 gross tonnage) MCA (Cayman Island Shipping Registry)

PRINCIPAL DIMENSIONS

HULL	Length O.A.	46,00	m
	Length WL	41,16	m
	Beam	9,00	m
	Design Draft (50% full)	2,40	m
TONNAGE	Gross	490	t
	Displacement (50% full)	404	t
SPEEDS	Maximum speed about 14,8 knots (@ 1,800 rpm)		
	Cruising speed about 12 knots (@ 1,400 rpm)		
RANGE	3,200 n. Miles approx. @ cruising speed		

TANK CAPACITIES (approximate)

FUEL	56,900	litres
WATER	12,000	litres
LUB OIL	1,600	litres
DIRTY LUB OIL	1,800	litres
GRAY WATER	14,800	litres
BLACK&GRAY WATER COLLECTING TANK	10,600	litres
BILGE TANK	5,700	litres

PAINT SYSTEM

INTERIOR TANKS	Akzonobel International
HULL TOP SIDES AND SUPERSTRUCTURE	Akzonobel Awlgrip
UNDERWATER SURFACES AND BOOTTOP	Akzonobel Awlgrip

MACHINERY

MAIN ENGINES	2 x 1000 bhp (746 bkW) @1800 rpm Caterpillar C32 12 cyl. diesel engines
GEAR BOXES	Reintjes (4:1) reverse reduction gear boxes
SHAFTS & PROPELLERS	Teignbridge 2 x DUPLEX stainless steel shafts with 2 x 5-bladed NIBRAL propellers approx Ø1400 mm

AUXILIARY MACHINERY & ELECTRICAL SYSTEM

GENERATORS	2 x 100 kW Caterpillar
ELECTRICITY	380Volts AC 3 phase 50 Hz, 220 Volts AC single phase 50Hz, 24Volt DC
SHORE POWER	380 Volt / 220 Volt 3 phase 50 HZ

ANCILLARY EQUIPMENT

BOW THRUSTER	1 x 90 kW Wesmar electrical bowthruster
STABILIZERS (HYD)	Wesmar Zero Speed stabilizers
OIL/WATER SEPARATOR	1 x RWO oil/water separator
WATERMAKERS	2 x Idromar reverse osmosis watermakers, 2 x 7,200 litres per day
BOILERS	2 x 12 kW 250 litres hot water boilers
FRESH WATER SYSTEM	2 x Wilo pumps with frequency drives
SEWAGE TREATMENT	Hamman sewage treatment system
WC's	Evac vacuum toilet system
AIRCONDITIONING	432,000 BTU Cruisair Air conditioning, 106,000 BTU Fresh Air Make up unit system for Acc.area. Heinen Hopman air conditioning and cooling system for engine room

DECK EQUIPMENT

BOAT CRANES	Hydraulic telescopic 2000kg@5m boat crane in garage Hydraulic folding 1250kg@5.5m boat crane in fwd locker
PASARELLE	Hydraulic telescopic lifting pasarelle and also swimming ladder purposed
BOARDING LADDER	Hydraulic boarding ladder on starboard side
POOL	Built-in spa-pool on Sundeck approximate Ø2400 mm diameter

NAVIGATION EQUIPMENT

BRIDGE DISPLAYS	5 x Hatteland 23” or equivalent monitors
X-BAND RADAR SYSTEM	2 x Simrad, Furuno or equivalent, IMO approved ARPA, 12 kW Radar scanner with 6 feet array
GPS&CHARTPLOTTER SYSTEM	1 x Simrad, Furuno or equivalent multi-functional NSO EVO2 MF GPS & Chartplotter system processor, broadband 4G radar, echosounder
GPS SYSTEM	1 x Simrad, Furuno or equivalent approved GPS system with GPS antenna and dedicated control & display unit
CLASS-A AIS SYSTEM	Simrad, Furuno or equivalent approved AIS system, including the Transponder, AIS-GPS Antenna and AIS-VHF Antenna.

COMMUNICATION EQUIPMENT

INMARSAT MINI CSYSTEM	Sailor-6000 series or equivalent approved Mini-C GMDSS system including a message terminal, alarm panel, printer, antenna and emergency battery
VHF SYSTEM	2 x Sailor-6000 series or equivalent CLASS A VHF DSC system, including Sailor VHF DSC control with handset and remote handset for each system
EPIRB, SART	1 x Simrad SA70 SART; 1 x Simrad EG70 Auto/GPS EPIRB
GMDSS HANDHELD	
VHF RADIOS	2 x Entel HT649 GMDSS VHF radio pack with emergency Li & chargeable batteries
NAVTEX	1 x JRC NCR-333 NAVTEX receiver and antenna
INTERNET AT SEA EQUIPMENT	1 x Intellian V100gx or equivalent V-SAT antenna with Control Unit
TV AT SEA EQUIPMENT	1 x Intellian t110W HD ready Satellite TV antenna
EQUIPMENT ANTENNAS	1 x Hotspot / Wi-Fi antenna and 3 x 3G/4G GSM antennas for future requirements

SAFETY & SECURITY EQUIPMENT

SAFETY	4 x 16 man inflatable liferafts in glassfibre valises Extensive personal life saving equipment according to Classification and Flag state 1 x Rescue boat
FIRE FIGHTING NOVEC	fire extinguishing system for engine room Marioff watermist fixed fire extinguishing system for accomodation Portable fire exthinguishers located throughout in accomodation Fire fighting equipment according to Classification and Flag State

TENDERS & WATERSPORTS EQUIPMENT

TENDERS	1 x Novurania Chase 19 (main garage) 1 x Novurania DL 400 with 50hp Yamaha outboard
DIVING EQUIPMENT	1 x set of Scuba equipment 1 x Bauer compressor

ACCOMMODATION

LOWER DECK INTERIOR	Guest cabins, crew cabins, crew mess and laundry
MAIN DECK INTERIOR	Dining area and salon, pantry, dayhead, lobby, owner cabin and galley
UPPER DECK INTERIOR	Lounge and a bar in the salon, pantry, dayhead, captain’s cabin and wheelhouse.
OWNER’S	1 x double cabin located on the forward main deck with shower room, dressing room, snug room and office
LOWER DECK GUESTS	2 x twin, 2 x double cabins with shower
CAPTAIN’S	1 x double cabin located on upper deck with shower
CREW	4 x double bunks located with shower

OPTIONS

GYRO COMPASS	SIMRAD GC80 Gyro compass and control unit
INMARSAT FBB	Intellian FB150 Inmarsat FleetBroadband for global Voice and DATA communications over Inmarsat Global Network
THERMAL CAMERA	FLIR thermal or thermal/low light PTZ controllable camera
IT/WI-FI MANAGEMENT	Livewire FB-10 Access Controller or equivalent system for IT/Wi-Fi system control with off-vessel Internet connection and on-board wi-fi management



SARPYACHTS

Contact Details

Sarp Yat İmalat San. ve Tic. A.Ş.
Antalya Serbest Bölgesi 4 Sokak
No:9 Konyaaltı / ANTALYA / TURKEY
T: +90 (242) 259 45 52
F: +90 (242) 259 45 35
info@sarpyachts.com
sarpyachts.com

Sales & Marketing

Emre Şandan
Shipyards Manager
emresandan@sarpyachts.com
T: +90 (242) 259 45 52

Credits

Renderings: Tolga Çatal
Ö. Emre Terzioğlu
Illustrations: A. Kemal Aydabol
Photography: Hakan Yeşil

This brochure describes the design concept of the yacht. Design and/or specifications can deviate due to modifications.

SARP VACHTS



The Quality Life Deserves.

sarpyachts.com